



KEYA FUSION

TECHNOLOGY PVT LTD



ABOUT US :

Keya Fusion Technology, established in 2010, stands as a pioneering force in the manufacturing realm, specializing in cutting-edge machinery. Our forte lies in crafting state-of-the-art Cashew Manufacturing machines and Vacuum Packaging machines.

 6351084103

CATEGORIES :

- **VACUUM PACKING MACHINE**
- **CASHEW KERNEL GRADING MACHINE**
- **CASHEW PROCESSING MACHINE**

 info@keyafusion.com

• VERTICAL VACUUM PACKING MACHINE



TECHNICAL SPECIFICATIONS :

| | |
|---------------------------|---------------------------------|
| Sealing Length: | 640 |
| Phase | 3 Phase |
| Machine Dimension: | 1365 x 750 x 1110 |
| Chamber Dimension | W 730 x H 750 x D 330 |
| Voltage: | 440V-3HP-50Hz |
| Machine Cycle: | 10-80 sec |
| Number of Seals | 2 |
| Weight: | 180 |
| Capacity: | 1kg to 25kg cashews |
| Body Material: | SS and MS both Available |
| Duty Cycle | 24hrs |

ITEMS PACKED :

Pulses, Grains, Nuts, Vegetables, Dry-fruits, powder, Seeds, Paneer, Khoya, and Many more could be packed.



ABOUT THE PRODUCT:

It is a heavy duty Vacuum Packing Machine with dual seals, capable of packing Cashews weighing 1Kg to 25Kg.

• TABLE-TOP VERTICAL VACUUM PACKING MACHINE



TECHNICAL SPECIFICATIONS :

| | |
|--------------------|------------------------|
| Sealing Length: | 500mm |
| Power: | 2.2 KVA |
| Machine Dimension: | L 450 H 295 W 530 (mm) |
| Voltage: | 220V /440V |
| Machine Cycle: | 10-40sec |
| Chamber Size | W 530 H |
| Weight: | 70 kg |
| Capacity: | 100gms-3Kgs |
| Duty Cycle | 24 hrs |
| Body Material: | SS |

ITEMS PACKED :

Pulses, Grains, Nuts, Vegetables, Dry-fruits, powder, Seeds, Paneer, Khoya, and More



ABOUT THE PRODUCT:

Our tabletop horizontal packaging machine packing weights from 200gm to 2kg. It is Manufactured entirely in-house. Entire production from the body to the vacuum pump. This versatile machine is designed to pack a variety of items into brick shapes using Dyes/Moulds, and its portability and space-saving design make it highly efficient for various applications.

• TABLE-TOP HORIZONTAL VACUUM PACKING MACHINE



TECHNICAL SPECIFICATIONS :

| | |
|--------------------|-----------------------|
| Sealing Length: | 500mm |
| Power: | 2.2 KVA |
| Machine Dimension: | L 525 H 90 W 525 (mm) |
| Voltage: | 220V /440V |
| Machine Cycle: | 10-40sec |
| Weight: | 70 |
| Capacity: | 100gms-3Kgs |
| Body Material: | SS |
| Duty Cycle | 24 hrs |

ITEMS PACKED :

Pulses, Grains, Nuts, Vegetables, Dry-fruits, powder, Seeds, Paneer, Khoya, and More



ABOUT THE PRODUCT:

Our tabletop horizontal packaging machine is capable of packing weights ranging from 200gm to 2kg. It is entirely manufactured in-house, everything from the body to the vacuum pump.

• EXTERNAL NOZZEL VACUUM PACKING MACHINE



TECHNICAL SPECIFICATIONS :

| | |
|---------------------------|-------------------------------|
| Sealing Length: | 1000mm x 8 mm |
| Power: | 2.2Kw |
| Machine Dimension: | LxWxH (1085x1465x1860) |
| Voltage: | 415V--3Ph-50Hz |
| Machine Cycle: | 15sec-40sec |
| Number of Nozzle: | 2 |
| Weight: | 150 kg |
| Capacity: | 10kgs to 50kgs |
| Duty Cycle | 24hrs |
| Body Material: | Stainless Steel |

ITEMS PACKED :

We are industrial machinery manufacturers. We're excited to introduce you to our comprehensive range of our premium machines.



ABOUT THE PRODUCT:

We are industrial machinery manufacturers. We're excited to introduce you to our comprehensive range of our premium machines.

• DOUBLE CHAMBER VACUUM PACKING MACHINE



TECHNICAL SPECIFICATIONS :

| | |
|----------------------------------|------------------------|
| Sealing Length: | 600 |
| Machine Dimension: | 1550x850x1020mm |
| Voltage: | 440V 60Hz |
| Machine Cycle: | 10-40sec |
| Chamber Size(Single side) | 610x540x165mm |
| Weight: | 320 Kg |
| Capacity: | 1-8 packets/min |
| Body Material: | SS |
| Duty Cycle | 24 hrs |

ITEMS PACKED :

Pulses, Grains, Nuts, Vegetables, Dry-fruits, powder, Seeds, Paneer, Khoya, and More



ABOUT THE PRODUCT:

The vacuum packing machine removes air from packaging, preserving freshness and extending shelf life by creating a sealed, oxygen-free environment. It safeguards various products, reducing spoilage and enhancing hygiene without the need for preservatives, benefiting multiple industries including

• RAW CASHEW GRADING MACHINE



TECHNICAL SPECIFICATIONS :

| | |
|-----------------------|----------------------|
| Voltage: | 230V |
| Phase | Single |
| Weight: | |
| Capacity: | 1000 KG / HRS |
| Body Material: | MS |
| Duty Cycle | 24 hrs |

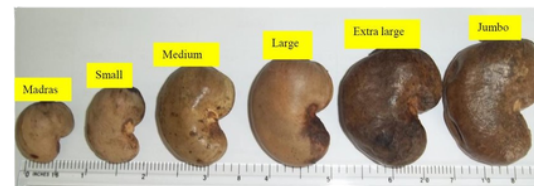
ITEMS PACKED :

We are industrial machinery manufacturers. We're excited to introduce you to our comprehensive range of our premium machines.



ABOUT THE PRODUCT:

The Automatic Raw Cashew Grading Machine efficiently sorts and categorizes raw cashew nuts based on size & shape. It separates premium-grade nuts from smaller or imperfect ones, ensuring consistency and high standards in the processing line.



• BOILER



TECHNICAL SPECIFICATIONS :

| | |
|-----------------------|---------------------------------|
| Dimension | 2.6 ft x 2.6 ft x 8.8 ft |
| Weight | 550-650kg |
| Capacity | 125kg - 2000kg/batch |
| Batch Duration | 60 to 70 Minutes |
| Material | Mild Steel |
| Pressure Gauge | yes |
| Safety Valve | yes |

ITEMS PACKED :

We are industrial machinery manufacturers. We're excited to introduce you to our comprehensive range of our premium machines.



ABOUT THE PRODUCT:

The Cashew Boiler is used to steam and soften cashew nut shells for easier removal in subsequent stages. It ensures uniform heating and controlled pressure to prepare raw cashew nuts efficiently for further processing, optimizing workflow and maintaining nut quality.

• CASHEW SHELLING MACHINE



TECHNICAL SPECIFICATIONS :

| | |
|-------------------|----------------|
| Motor | 1 HP |
| Phase | 3 Phase |
| Capacity | 25kg/hr |
| Body | SS |
| Duty Cycle | 24hr |
| Breakage | 5-10% |
| Weight | 160Kg |

ITEMS PACKED :

We are industrial machinery manufacturers. We're excited to introduce you to our comprehensive range of our premium machines.



ABOUT THE PRODUCT:

Cashew Shelling Machine: the pinnacle of efficiency and precision in cashew processing. With high-speed operation, adjustable settings, and durable construction, it streamlines shelling, maintains quality, and enhances productivity. Perfect for industries and businesses seeking faster, consistent, and hassle-free cashew nut processing.

• ELECTRICAL INDUSTRIAL OVEN

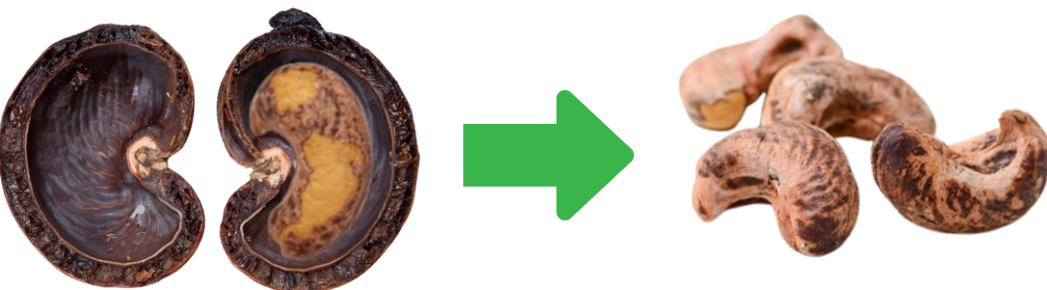


TECHNICAL SPECIFICATIONS :

| | |
|--------------------------|-----------------|
| Number of Trays | 50 |
| Body | MS |
| Capacity | 250 |
| Motor Power | 3HP |
| Electricity Phase | 3 Phase |
| Voltage | 415V |
| Power Source | Electric |

ITEMS PACKED :

We are industrial machinery manufacturers. We're excited to introduce you to our comprehensive range of our premium machines.



ABOUT THE PRODUCT:

The Cashew Dryer is a high-tech component in the processing plant that gently removes moisture from cashew kernels, preserving their quality, taste, and nutritional value. It employs controlled temperatures and humidity levels to ensure uniform drying, maximizing shelf life while maintaining eco-friendly and energy-efficient operations.

• CASHEW PEELING MACHINE



TECHNICAL SPECIFICATIONS :

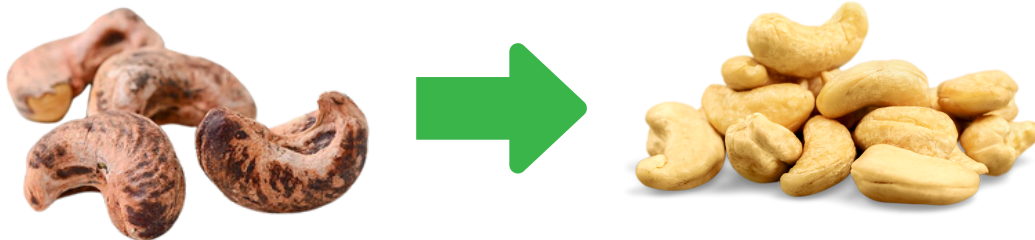
| | |
|--------------------|----------------|
| Weight | 170 |
| Voltage | 220 |
| Capacity | 50kg/hr |
| Motor Power | 1HP |
| Frequency | 50Hz |

ITEMS PACKED :

We are industrial machinery manufacturers. We're excited to introduce you to our comprehensive range of our premium machines.

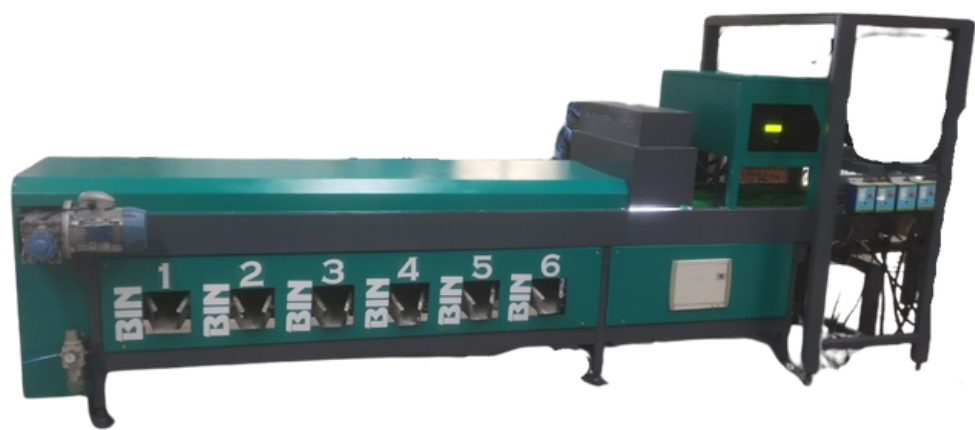
ABOUT THE PRODUCT:

The Cashew Peeling Machine automates the removal of the tough outer shell from cashew nuts, streamlining the process and ensuring high-quality kernels without damaging them.



• CASHEW KERNEL GRADING MACHINE

TECHNICAL SPECIFICATIONS :



| | |
|---------------------------|----------------------|
| Capacity | 150kg/hr to 170kg/hr |
| Number of Grades Possible | 9 in a single pass |
| Breakage | 2% or less Breakage |
| Defect and Husk Removal | Yes |
| Duty Cycle | 24hours |
| Total Power | 7.5HP total power |

ITEMS PACKED :

We are industrial machinery manufacturers. We're excited to introduce you to our comprehensive range of our premium machines.

ABOUT THE PRODUCT:

Our Cashew Kernel Grading Machine stands at the forefront of innovation using Image Processing and Artificial Intelligence. It is capable of sorting multiple grades of cashew simultaneously, this advanced system even color sorts various kinds of Cashew. It ensures the uniformity and high quality of cashew nuts for further processing, effectively reducing manual labor and upholding consistency in the production line.



• BUCKET CONVEYOR



ITEMS PACKED :

The Standard Bucket Conveyor is a durable system with buckets on a looped belt or chain, transporting various materials vertically or horizontally within industrial settings. It efficiently moves items between processing points, reducing manual labor and ensuring a consistent flow in production lines.

TECHNICAL SPECIFICATIONS :

| | |
|--------------------------|------------------------------|
| Body Material | MS and Plastic bucket |
| Duty Cycle | 24Hrs |
| Voltage | 230V |
| Frequency | 50Hz |
| Electricity Phase | 1 Phase |
| Operating Height | 10Feet |

ABOUT THE PRODUCT:

The Standard Bucket Conveyor is a durable system with buckets on a looped belt or chain, transporting various materials vertically or horizontally within industrial settings. It efficiently moves items between processing points, reducing manual labor and ensuring a consistent flow in production lines.